

dsRNA Standard(1mg/mL)

Product description

No.	Product name	Specification	Cat. No.
1	dsRNA(UTP)	100 µL	10601
2	dsRNA(N1-Me-pUTP)	100 µL	10602
3	dsRNA(Pseudo-UTP)	100 µL	10603

Storage condition and Transportation

1. The product is stored at -80°C, valid for 12 months.
2. Dry ice transportation.

Precautions

1. Avoid repeated freezing and thawing during use the product.
2. For safety and health of the operator, please wear a lab coat and disposable gloves when operating.

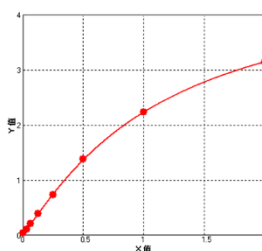
Application examples (dilution gradient recommendations)

No.	Volume of standard	Volume of diluent (µL)	Concentration of standard
Pre-A	Take 5 µL of dsRNA standard (1 mg/mL).	45	100 ng/µL
Pre-B	Take 10 µL of Pre-A	190	5 ng/µL
S0	Take 10 µL of Pre-B	490	100 pg/µL
S1	Take 10 µL of S0	490	2 pg/µL
S2	Take 250 µL of S1	250	1 pg/µL
S3	Take 250 µL of S2	250	0.5 pg/µL
S4	Take 250 µL of S3	250	0.25 pg/µL
S5	Take 250 µL of S4	250	0.125 pg/µL
S6	Take 250 µL of S5	250	0.0625 pg/µL
S7	Take 250 µL of S6	250	0.03125 pg/µL
S8	NA	250	0

Fig.1 For dsRNA standard (UTP)

dsRNA std (UTP) standard curve

<>	OD value	Conc. (pg/ul)	OD value AVE	
A	3.0421	3.2491	2	3.1456
B	2.2153	2.2497	1	2.2325
C	1.3661	1.4059	0.5	1.386
D	0.7431	0.7339	0.25	0.7385
E	0.3895	0.3937	0.125	0.3916
F	0.2165	0.2122	0.0625	0.21435
G	0.1073	0.1111	0.03125	0.1092
H	0.0387	0.0363	0	0.0375

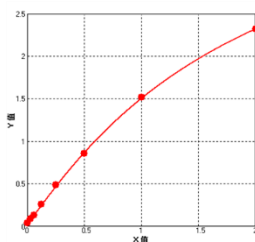


Four-parameter Logistic curve fitting
Equation: $y = (A - D) / [1 + (x/C)^B] + D$
A = 4.73792
B = -1.14794
C = 1.11815
D = 0.03843
 $r^2 = 0.99994$

Fig.2 For dsRNA standard (N1-Me-pUTP)

dsRNA std (N1-Me-pUTP) standard curve

<	OD value	Conc. (pg/ul)	OD value AVE
A	2.3474	2	2.3212
B	1.5089	1	1.51755
C	0.8708	0.5	0.8537
D	0.4853	0.25	0.4833
E	0.258	0.125	0.2572
F	0.1332	0.0625	0.1327
G	0.0871	0.03125	0.08535
H	0.0387	0	0.0375

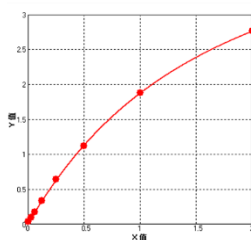


Four-parameter Logistic curve fitting
Equation : $y = (A - D) / [1 + (x/C)^B] + D$
A = 4.49500
B = -1.09578
C = 1.90869
D = 0.03718
r² = 0.99986

Fig.3 For dsRNA standard (Pseudo-UTP)

dsRNA std (Pseudo-UTP) standard curve

<	OD value	Conc. (pg/ul)	OD value AVE
A	2.7979	2	2.76235
B	1.8466	1	1.88035
C	1.1082	0.5	1.1239
D	0.6477	0.25	0.6463
E	0.3389	0.125	0.3369
F	0.1728	0.0625	0.17445
G	0.0948	0.03125	0.0967
H	0.0387	0	0.0375



Four-parameter Logistic curve fitting
Equation : $y = (A - D) / [1 + (x/C)^B] + D$
A = 4.92200
B = -1.05855
C = 1.60121
D = 0.02931
r² = 0.99992

Manufacturer: Synthgene Biotechnology Co., Ltd.

Building B6-2, No. 9, Weidi Road, Xianlin University Town, Xianlin
Subdistrict, Qixia District, Nanjing City, China

E-mail: info@synthgene-bio.com Tel: +86(025)83696681